

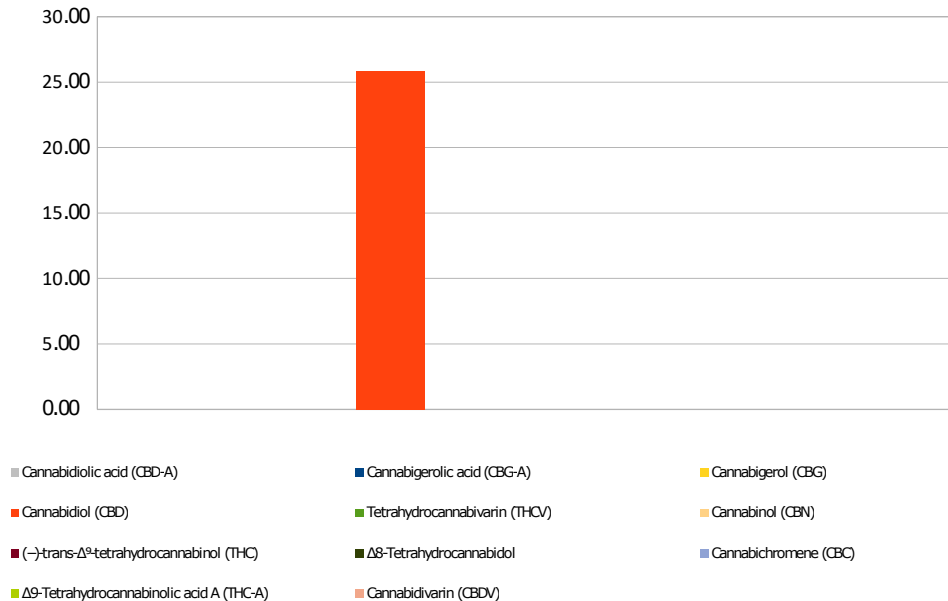
# Cannabinoid Profile

Customer: AK Wellness & Supplements  
 Customer Sample ID: Strawberry/Banana Rings  
 Laboratory Number: 201903-1232  
 Extraction Technician: GB  
 Analytical Chemist: MF

Extraction Date(s):	Analysis Date(s)
5/25/2019	5/26/2019

Cannabinoid (HPLC)		Results	
	LOD (mg/g)	Percent	mg/gummy
Cannabidiol (CBD)	<0.2		
Cannabidiolic acid (CBD-A)	<0.2		
Cannabigerolic acid (CBG-A)	<0.2		
Cannabigerol (CBG)	<0.2		
Tetrahydrocannabivarin (THCV)	<0.2		
Cannabinol (CBN)	<0.2		
(-)-trans- $\Delta^9$ -tetrahydrocannabinol (THC)	<0.2		
$\Delta^8$ -Tetrahydrocannabinol	<0.2		
Cannabichromene (CBC)	<0.2		
$\Delta^9$ -Tetrahydrocannabinolic acid A (THC-A)	<0.2		
<b>Cannabinoids Total</b>		<b>Percent</b>	<b>mg/gummy</b>
Max Active THC		0.00%	0.00
Max Active CBD		<b>2.58%</b>	<b>25.92</b>
T. Active Cannabinoids		<b>2.58%</b>	<b>25.92</b>
Total Cannabinoids		<b>2.58%</b>	<b>25.92</b>
<b>Ratios</b>			
NA CBD to THC		<b>0.00 :1 THC to CBD</b>	

Cannabinoid (mg/g)



Altitude Consulting, LLC utilizes NIST traceable Reference Standards and Certified Reference Material to calibrate analytical instruments along with proven analytical methods. The methods are applied in the most ethical manner following good laboratory practice guidelines. The results of this report are based solely on the sample submitted and cannot be reproduced.

This report expires 30 days after analysis date.